

TRIANGLE PROFILING STEEL

Corporate Profile



13 Michelin Street , Vanderbijlpark
Web : www.tpssteel.co.za E-mail : sales@tpssteel.co.za

TRANGLE PROFILING STEEL (Pty) Ltd

Manufacturing, Steel Fabrication & Merchandising, Steel & Civil Works.



CONTACT DETAILS:

TEL NO: 016 986 2111
FAX NO: 016 986 2112
CELL NO: 083 399 7126
Email: sales@tpssteel.co.za

PHYSICAL ADDRESS:

13 Michelin street
NW 7
Vanderbijlpark
1911

POSTAL ADDRESS

P.O Box 429
Vereeniging
1930

Triangle Profiling Steel

1. Background

Triangle Profiling Steel (Pty) Ltd started operations in 2004 and has since established itself in the manufacturing, steel fabrication, steel merchandising, building maintenance, steel and civil works. They are an approved supplier of Rand Water, CBI African Cables, M-TEC, ArcelorMittal, Sasol, Sedibeng FET, Vesco Community Enterprises etc. The company's head office is in Vanderbijlpark.

The BBB-EE status is Level 3.

2. Mission

Triangle Profiling Steel (Pty) Ltd endeavours to:

Enhance the highest values of quality, safety, environment and cost effectiveness and thus become an icon in the industry.

3. Vision

Triangle Profiling Steel (Pty) Ltd strives to be the best supplier and service provider to its customers.

4. Safety, Health and Environmental Policy

Triangle Profiling Steel (Pty) Ltd is committed to:

Working with employees and other stakeholders in appropriate forums, through a transparent process, to develop responsible and innovative programmes and guidelines that provide safeguards for the community, employees, customers and the environment, while providing flexibility to meet the needs of their businesses. Triangle Profiling Steel (Pty) Ltd will develop and work according to an agreement with the employees regarding the management of Safety and Occupational Health.

Achieving high standards of environmental care and providing a safe and healthy workplace for employees, customers and all other stakeholders.

Ensuring a proper organisational structure to manage safety, health, environmental issues and legal compliance where everyone in a managerial or supervisory position takes responsibility for the safety and health of those working under them and for sound environmental management.

Implementing internationally accepted safety, occupational health and environmental management systems throughout the company; complying with all applicable legislation as a minimum requirement and implementing programmes and processes to achieve greater protection, where appropriate;

Hazard identification and risk assessment regarding safety, health and environmental impact before commencement of a project or any work through a proper programme and procedures; establishing competence and awareness regarding relevant safety, health and environmental matters of all its employees through effective training, mentoring and communication;

Ensuring that all employees report potential safety, health and environmental hazards and issues, and are involved in the planning and implementing of solutions;

Conserving natural resources and reducing the environmental burden of waste generation and emissions to the air, water and land through strategies focusing on reducing, reusing, recycling, and safe deposit of waste as well as prevention of pollution;

Applying continuous improvement methodologies to develop environmentally compatible products and processes which do not create unmanageable safety or health risks;

Ensuring that all incidents leading to an injury, and occupational diseases or damage to property or the environment are investigated thoroughly and anticipatively in order to determine route courses and to promptly implement corrective actions

Establishing and maintaining appropriate controls including periodic audits and reviews, to ensure that this policy is being followed and complied with throughout the company; and maintaining a high level of emergency preparedness to handle any situation caused by an incident.

5. Environmental Policy

Triangle Profiling Steel (Pty) Ltd is committed to wise resource use, waste minimization, recycling of materials and an ongoing drive to conserve the environment.

It is our mission to aid our clients, to achieve current and future social, economic and cultural requirements of all who reside within its service area by adhering to our Environmental Policy and our client's Environmental Management System.

We shall implement environmental awareness into all our activities by adhering to clients' Environmental Systems based upon National and International Standards by adhering to its register of applicable laws, relevant to the environment and by, if deemed necessary, going beyond compliance to protect the environment.

Triangle Profiling Steel (Pty) Ltd employees shall be trained to understand environmental issues and equipped to apply our Environmental Policy, motivated to continuously improve environmental performance.

This Policy shall be reviewed by our SH&E Committee when changes necessitate. This Policy shall aid in enhancing security for all employees and reduce property damage exposures.

Triangle Profiling Steel (Pty) Ltd staff is totally committed and participates actively and enthusiastically in this vital aspect, as is expected of all environmentally conscious employees.

6. Quality Policy

Management hereby pledges its full commitment to excellence and shall endeavor to entrench the concept throughout all levels of Triangle Profiling Steel (Pty) Ltd.

Triangle Profiling Steel (Pty) Ltd mission is to improve the output quality of our services, as well as improve and formalize the controls and processes within the organization, in order to accomplish our mission.

Triangle Profiling Steel (Pty) Ltd has therefore embarked on a program of continuous improvement in all aspects of the company, with the foundation being the implementation of an ISO 9001:2008 Quality Management System (QMS) to obtain our vision of being a world class competitor in the Building Maintenance, Steel and Civil Work fields.

7. Steel Service centre and Fabrication

Flame and Laser cutting of steel profiles for various applications in manufacturing and engineering industries. Steel profiles are used for manufacturing of mining equipment, gear boxes, farming equipment, plant equipment, pumps, valves, lifting equipment etc. We have other other services such as rolling of screens and plates.



Flame cutting



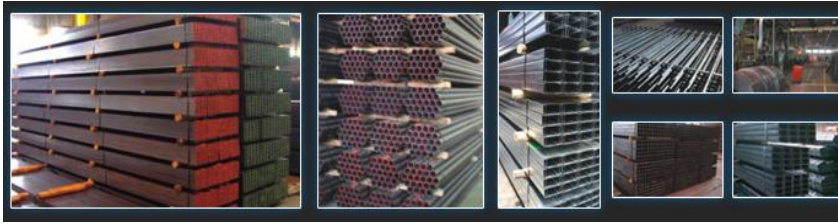
Rolling of a screen for the mine



Various shapes of steel profiles

8. Steel Merchandising

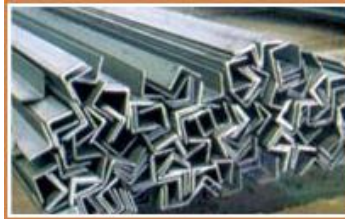
Steel merchandising forms a big percentage of our business and the range of products sold include tubing, structural steel, carbon and certified steel plates including stainless steel. Certificates are issued for certified material like stainless steel.



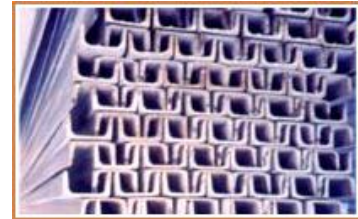
Tubing and Cold formed sections.



I-Beams



Angle Iron



Channels

9. Projects/Site Work

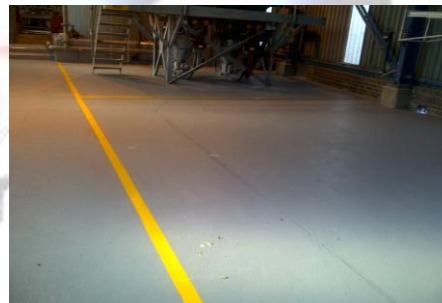
9.1 Maintenance of Industrial Buildings and Plants

Triangle Profiling Steel (Pty) Ltd has undertaken a variety of projects including the laying of trusses and roof sheets, roof repairs, replacement of damaged Polycarbonate, IBR and Corrugated sheets on walls of industrial buildings; painting of industrial and commercial buildings, offices, ceilings, etc.

Industrial plant maintenance projects include water proofing and protective coating against corrosive acids and alkalines as well as painting of industrial plants.



Preparation of the concrete floor for epoxy painting in a chemicals storage plant at Panfontein (Rand Water).



After the floor has been epoxy painted and demarcated.



Painting of a water pumping engine room at Zuikerbosch (Rand Water).



Painted Handrails and stairs in the engine room at Zuikerbosch (Rand Water).

10. Fabrication and Erection of steel structures

We have a team of qualified welders for fabrication of steel structures in the workshop or on site. Where necessary, civil work is done according to specifications given by the Civil Engineer for the preparation of the erection of the structure.



Manufacturing and erection of a steel structure for a government project in Coleen (Free State).



Manufacturing and erection of a double rail pallisade cage for ArcelorMittal Vanderbijlpark.



Manufacturing of Steel Bill Board Frames for Free State Development Corporation



Preparation of 150mm OD x 8mm thk x 6m Long Steel Pipes for Bill Board Frames

...Fabrication and Erection of steel structures



Loading and transporting the steel frames to Site.



Erecting the Bill Board Frames in Harrismith for FDC.

11. Fabrication and installation of Fencing Material

We manufacture and install fencing material according to specifications or design given by customers. This may include supply, fabrication and installation depending on the arrangement the customer is comfortable with.



Erection of pallisade fencing at a private house in De Deur.



Fabrication of steel gates for Rand Water.



The gates are ready to be taken on site for installation at Rand Water.



Fabrication and Erection of a carport at Rand Water.

12. Construction and Civil Projects.



Preparation of the plinths for the building of a Warehouse at Rand Water Zuikerbosch



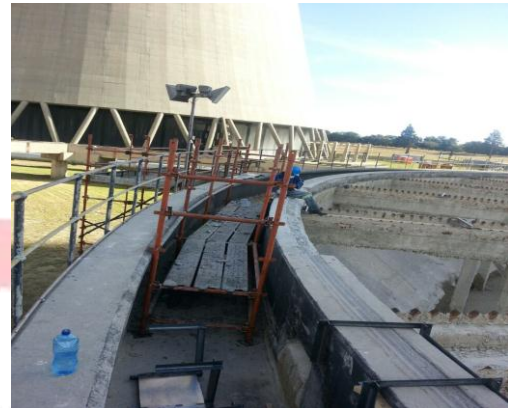
IPE Sections are erected before the laying of the bricks.



Bricklaying is almost complete on a 3m high warehouse.



Chromadek IBR was used for the roof.



Repair of damaged concrete on a clarifier at Eskom Lethabo Power Station

Triangle Profiling Steel